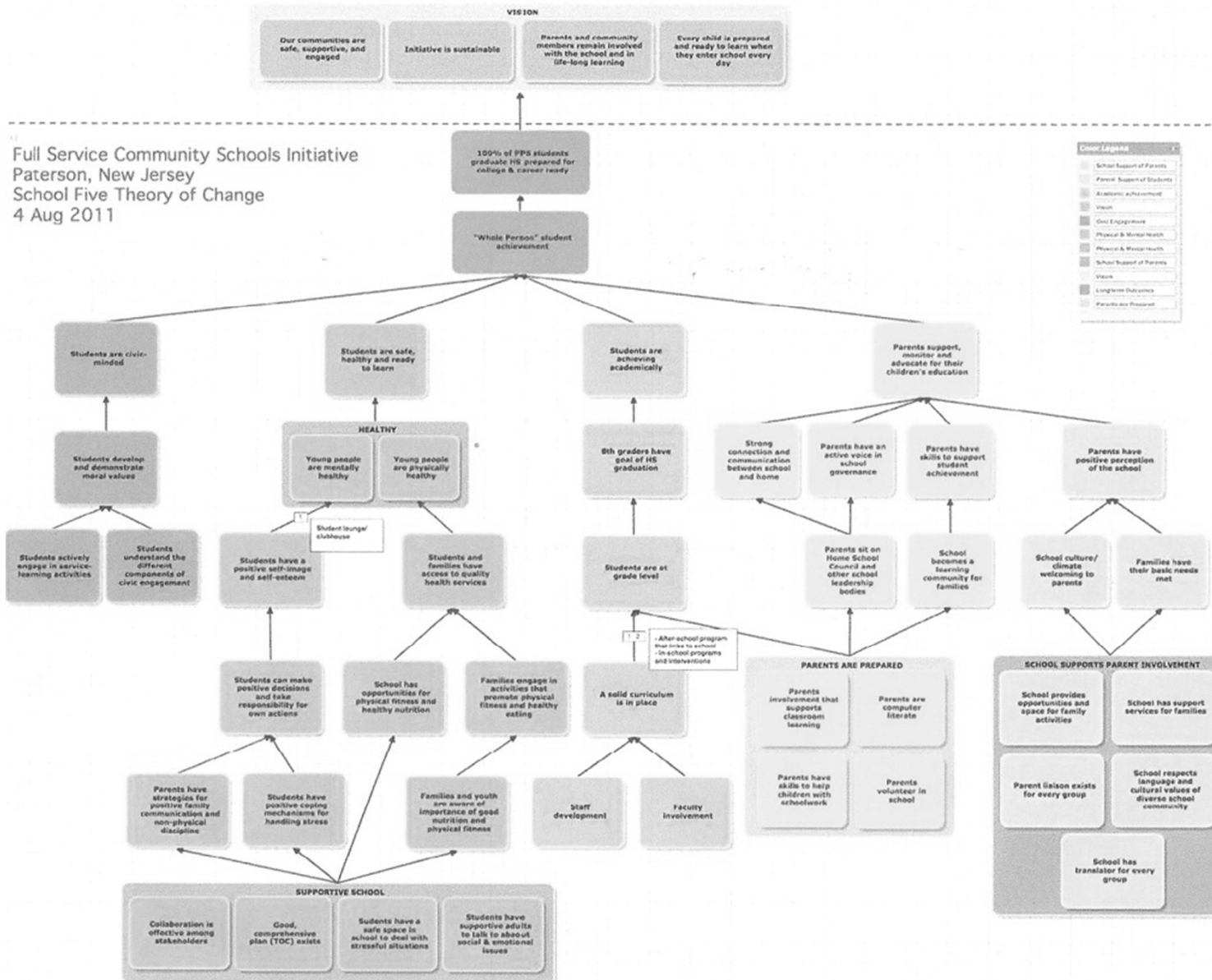


# **Examples of graphic representation of a logic of intervention**

# Intervention logic - Example



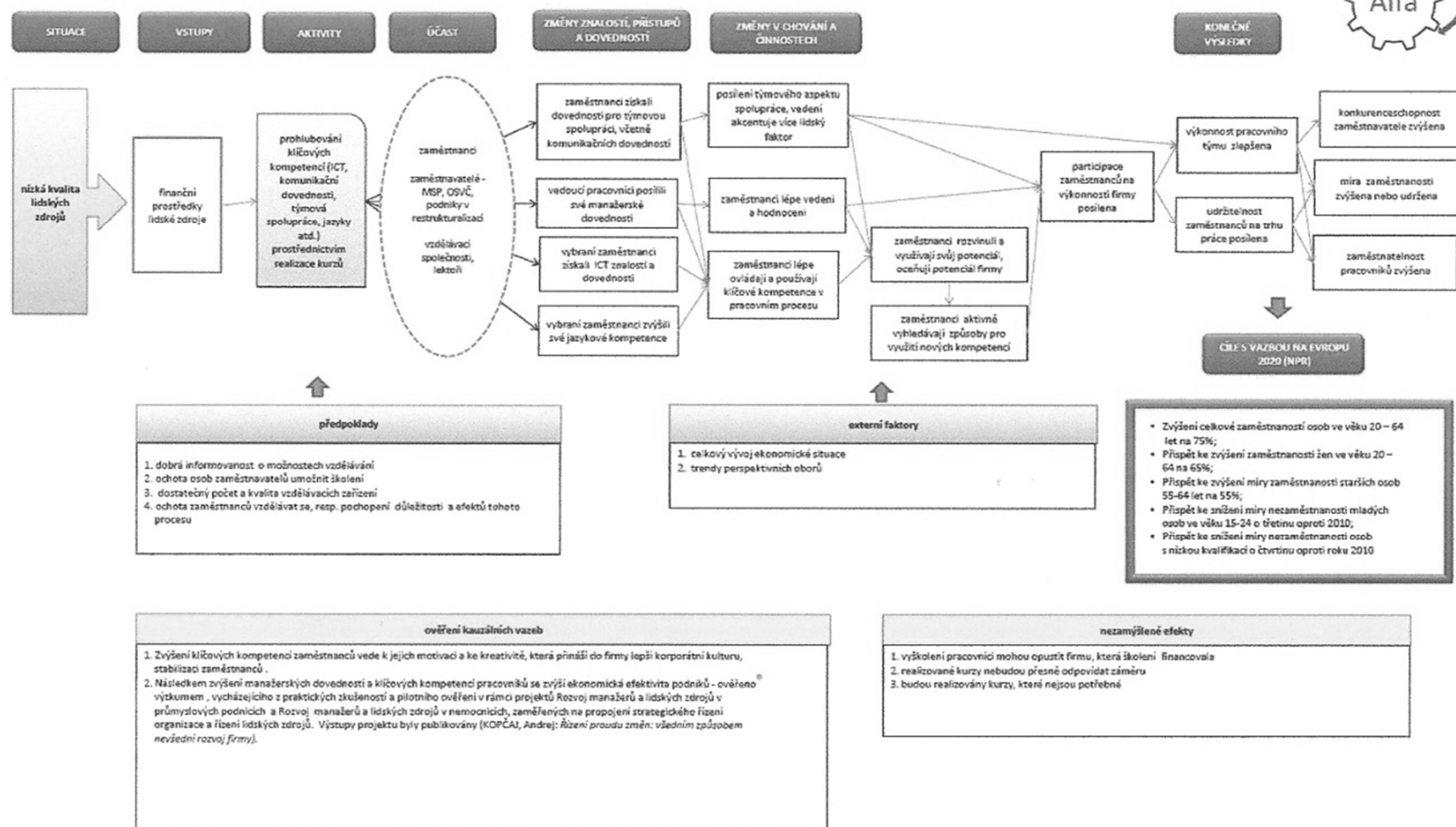
# Intervention logic - Example



European  
Commission

## TEORIE ZMĚNY

Il. Další vzdělávání v podnicích a podpora udržení zaměstnání



# Intervention logic - Example



European  
Commission

TEORIE ZMĚNY

III. Další vzdělávání v podnicích a podpora udržení zaměstnání



We recall the problem situation we are trying to solve here

**ToC: Chain of events in the programme (similar to Michael Q. Patton's)**  
**Inputs > Activities > Participation > Reaction > Changes in knowledge, approaches and skills > Changes in behaviour and activities > Final outcomes (> relevant EU 2020 goals)**

**Assumptions**

**External factors we expect**

**References to existing evidence on suggested causal links**

**Possible side effects**

# Intervention logic - Example

Long-term impact

Formation of country-led strategies

Community impacts within 5-10 years

Shifts in community capacity and conditions within 5 years

Shifts in community capacity and conditions within 3 years

Inputs & Activities

The Hunger Project  
Africa Program Theory of Change  
7/18/11

